

**Flat C.** A single bedroom 60m<sup>2</sup> flat, located on the first floor incorporating a spacious kitchen diner and open plan living room, and front facing balcony.

## Technology

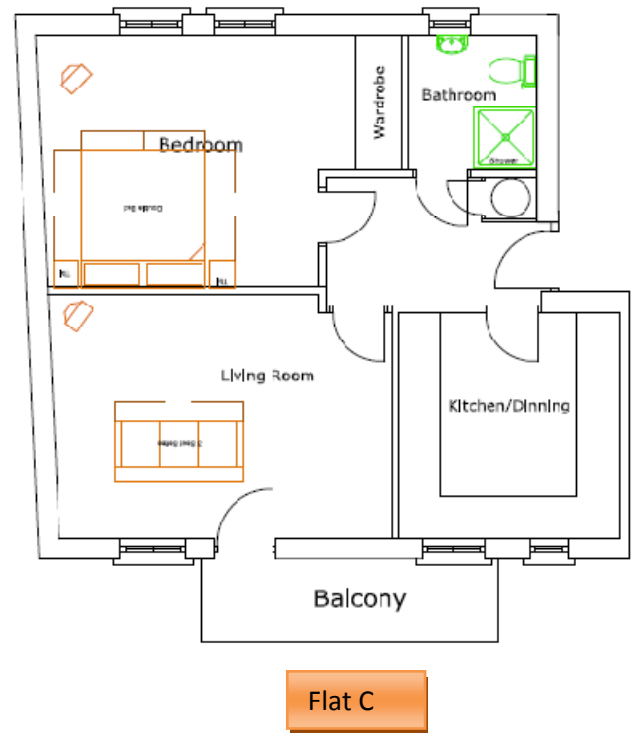
Each flat has been equipped with the provisions for Sky Television including dual cabling for Sky Plus or Sky HD. The flats also have the necessary cabling to allow tenants to setup broadband networking.

## Security

Each flat will also benefit from its own alarm system and connection to the buildings exterior closed circuit television (CCTV) system



## Typical Layout



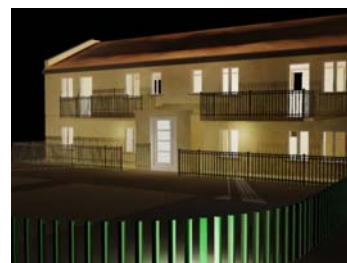
## Kitchen and Living Room Artist Impression



**Bathroom**



**Bedroom Artist Impression**



**Exterior Artist Impression**

Construction is due to complete in December 2008. We are looking forward to inviting new tenants by **January 2009**.

Contact our letting team:

 020 3051 1618

 [Let@MonarchDrive.co.uk](mailto:Let@MonarchDrive.co.uk)



[www.MonarchDrive.co.uk](http://www.MonarchDrive.co.uk)